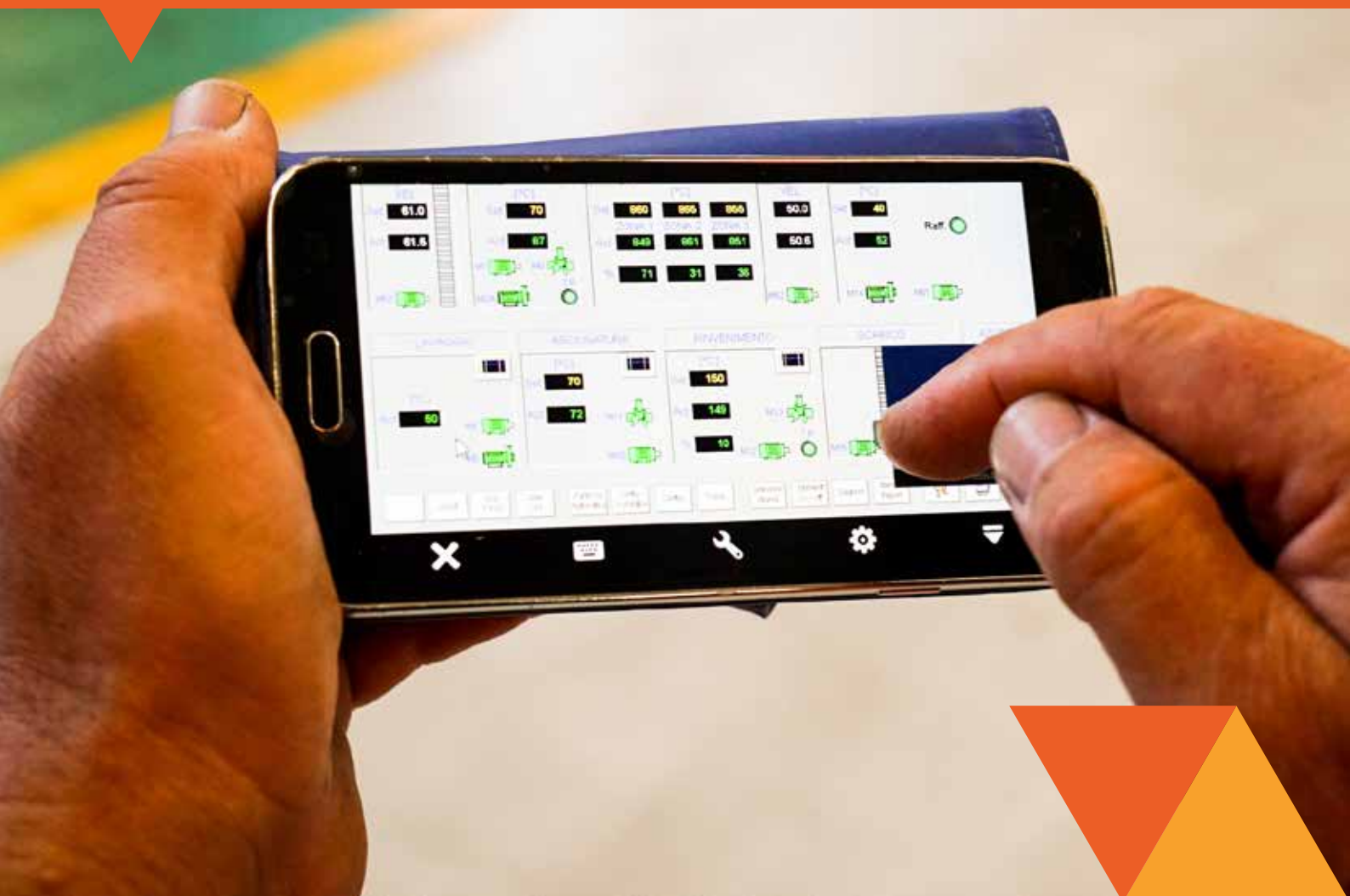
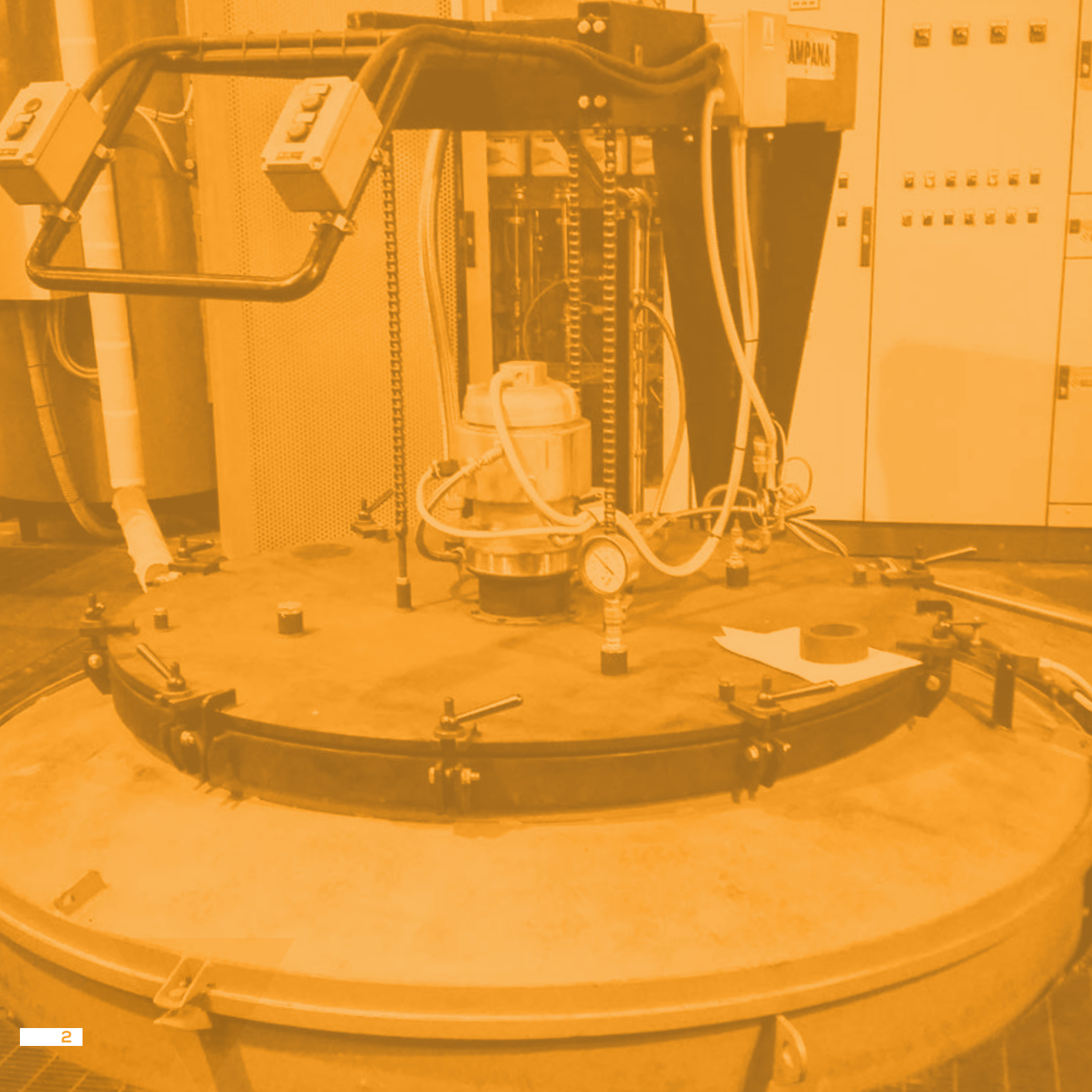


# CAMPANA

M A D E I N I T A L Y

A system that can help the work and the management of every production line





# ABOUT US

Campana Forni praises **over 30 years of experience** in industrial furnaces field. Since its start, we perfected our professional knowledge in order to offer to the client turnkey solutions.

Today, Campana Forni is a well-structured business, able to approach with flexibility and dynamism, offering its professionalism and operating with passion and competence.

Over the years we tried to expand our services, in order to offer **practical solutions even for production lines** that involve machines and systems different from the heat treatment.



## OVER 30 OF EXPERIENCE



# OUR WORK

We are specialized in manufacturing and distribution of industrial furnaces. Our know-how and our technical heritage come, among other things, from the work of Eng. Italo Montevercchi, who made the **Italian history of heat treatments** and controlled atmosphere techniques.

Annealing, tempering, melting and nitriding are only some of the process made possible by our systems.

We follow the client since the project phase, through building and assembling. Then, we take care of the transport and installation onsite and follow the client for maintenance and assistance.

With time, we realized that the client satisfaction is our satisfaction, so we thought of a better way to improve our offer through new services.



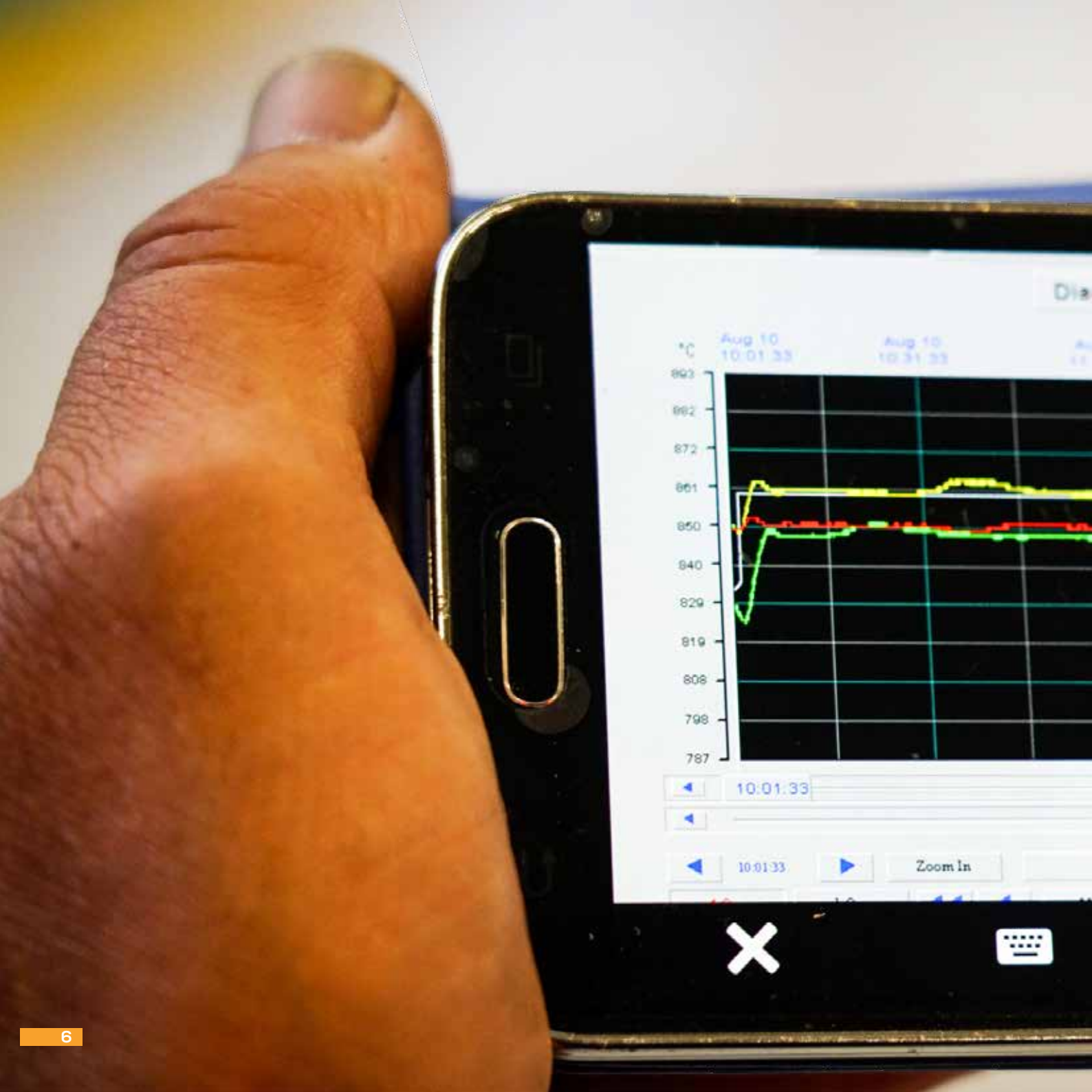
KNOW-HOW



TECHNICAL HERITAGE









ELIMINATE THE  
IN-PERSON  
ASSISTANCE



CONTROL  
ALL THE MACHINES



IMPROVE  
THE WORK

# THE REMOTE-CONTROL SYSTEM

Campana Forni offers a system that can help the work and the management of **every production line**. It is a special integration of hardware and software, that gives the chance to **control from remote all the machines**, allowing to start and end cycles, trace the performances and the potential alerts and much more.

This is possible through a complex project that we develop, build and assembly directly in the client machines.

This system can **significantly improve the work** and the everyday life of every kind of production site, both from the machines performances that from the operators work point of view.

# HOW IT'S MADE

The hardware part of this system is made up by a series of **sensors placed in every machine**, that live transmits the information to main system that collects and records them. The main system, that is the hardware, and the software are composed by a Plc – Program Logic Controller – and an Hmi – Human Machine Interface.

The Hmi is the instrument through which the operator can control and act on the machines, and consists in a **touch screen with all the options available**. The system is protected by a password and it is possible to create different security levels.

If any anomaly occurs, the system provides an alarm with an acoustic signal and, if it is configured, an SMS or e-mail will be sent.

If the operator is not able to take an action, by remote the responsible or the maintenance supervisor can evaluate the alarm condition and, if the machine is in critical issue, he can stop the cycle.



INTERFACE



TOUCH SCREEN



In this way not only the safety of the production line is guaranteed, but it is also possible to have a real-time feedback on what is going on.

Our system is **completely customizable**, in order to control and manage every detail of the production line. It is possible to have a report at the end of every production cycle, or at regular intervals, with all the parameters, the recorded alerts and the actions made by the operator.

Trend diagrams are also available to have an immediate view of the results.



**SENSORS**



**TOUCH**



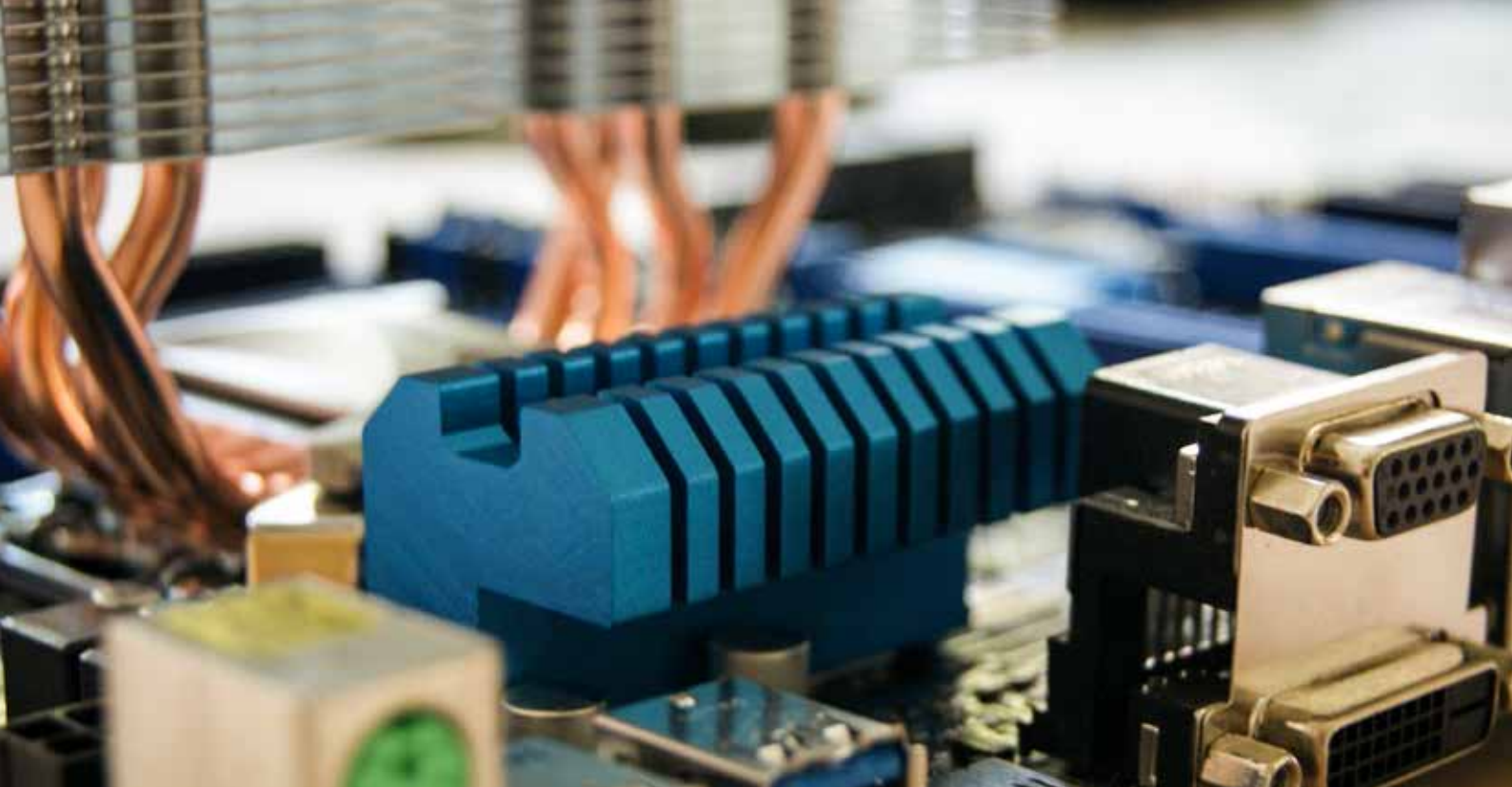
**SAFETY**



**CUSTOMIZATION**

A SAFE AND COMPLETELY  
CUSTOMIZABLE SYSTEM





# WITH YOU STEP BY STEP

We don't just take care of realizing the system. We go forward in order to offer to our clients a **complete service**, so that all they need to do is push the button and let the system do the rest.

Our work includes a **training to the operators** that have to use the system, in order to assure the best performances.

We also release a **user guide**, specific for every machine. We will be in-site for the first start, to check the correct functioning and support the operators, and we will be available for help and to find the correct cycles parameters.



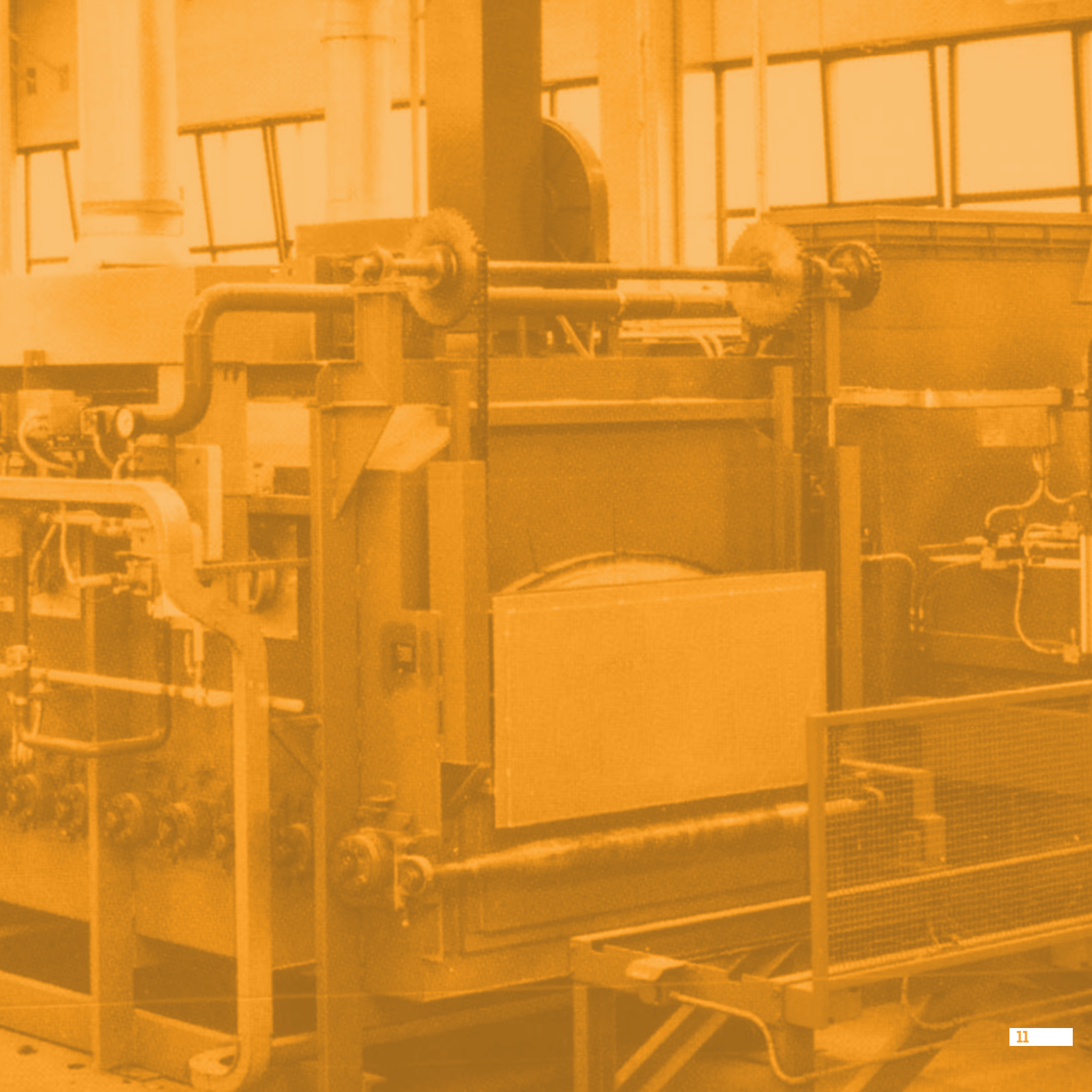
COMPLETE SERVICE



TRAINING



USER GUIDE





# OUR WORKFLOW

Our system is able to perform both on our machines and on third-part systems. In order to do so, it is necessary to plan a visit to the factory to evaluate what strategy could work best. So our workflow follows this guidelines:







#### PHASE 01

Analysis of the machines, in order to find the best suitable solution



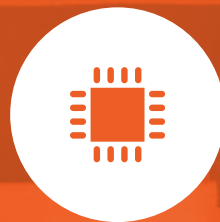
#### PHASE 02

Developing of the project by our engineers' team



#### PHASE 03

Assessment with the client to check if the project satisfies his needs



#### PHASE 04

Construction of the hardware and software developing



#### PHASE 05

Internal test



#### PHASE 06

Transport and installation



#### PHASE 07

Training to the future users



#### PHASE 08

Support on the first start



#### PHASE 09

Final check



#### PHASE 10

Remote control and assistance



# WHAT WE CAN DO FOR YOU

Our industrial furnaces are all equipped with the system, so that there's no need for further integrations. But, since we can also add the system to third-part machines, the entire production cycle of every type of process can be **monitored and managed with Campana Forni system**.

This is what we made for **Precision Bearing Components**. The company, that produces balls, rollers, cages and sheet metal parts has a complex and long production line, that needs a likewise complex work for the management.

We created a **special remote-control system** for the furnaces, that helped the work of the operators, the machines functioning and the performances report.

With this system, it is possible to start, end and pause the cycle of the single machine, receive a report of the cycle – including the alerts – adjust the parameters and valuate the performances.

It is important to have the **maximum control of the machines**, especially when they can cause risky conditions such as high temperatures, toxic substances and so on.



Through this innovative system it is possible to eliminate the in-person assistance, reduce the intervention time and **increase the productivity**.

Campana Forni will be just at the other end of the line.

Moreover, this system is part of the Industry 4.0 incentives, that allows to **receive hyper-amortization on the investment** made regarding the digitization of the business.



# CAMPANA

M A D E I N I T A L Y

Via Dell'Artigianato, 17  
28043 Bellinzago Novarese (NO)

Tel: +39 0321.986529

Cell: +39 334.6012481

Fax: +39 0321.987302

[info@campanaforni.it](mailto:info@campanaforni.it)



[campanaforni.it](http://campanaforni.it)



CAMPANA